

Tell Your Paper Cups Where To Go.

Infinite Motion Control offers a full range of high-speed paper cup diverters, renowned by paper cup manufacturers the world over as a trouble-free, low-cost, cup-diverting solution. IMC's paper cup diverter provides jam-free, on-the-fly diverting of paper cups at rates exceeding 300 cups per minute.

The optional microprocessor control makes this high-tech workhorse easily programmable. A small touchscreen display provides quick, easy access to all operational parameters.

And talk about versatility! IMC paper cup diverters – available in three models to handle cups from standard sizes to jumbo tubs – have

been adapted to a wide range of cup-diverting applications:

- Diverting the first paper cups out of production when the cup-former begins running
- Diverting cups to different packing stations
- Diverting sample cups to inspection stations
- Diverting defective cups out of production
- Paper cup sorting applications

Talk to us about your needs. Our design team will customize your cup diverter to meet your exacting requirements. And with our accelerated time to market, you'll be up to speed in no time.

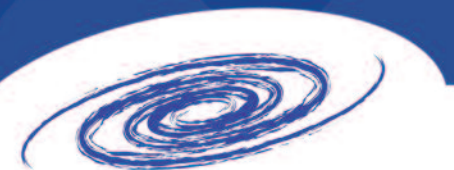
Add Inline —
Anywhere you have
Busada Tubing !



www.infinitemc.com

Infinite Motion Control, Inc. an engineering company

W60N151 Cardinal Ave. ■ Cedarburg, WI 53012 USA ■ Phone: +1 (262) 242-4333 ■ Fax: +1 (262) 242-5333

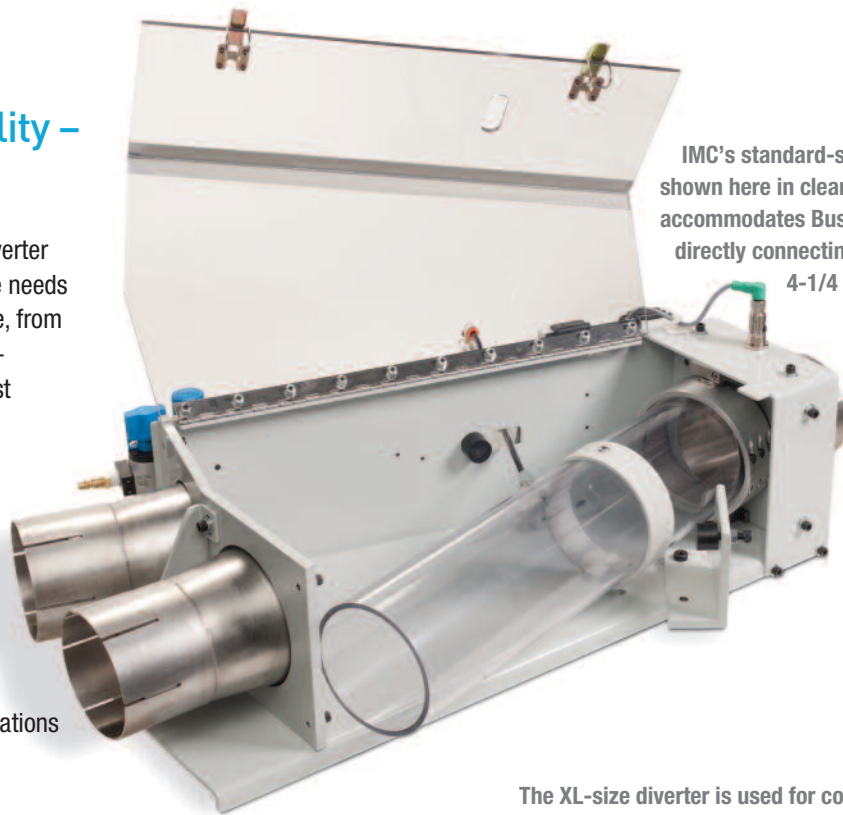


IMC Speed and Reliability – in Any Size or Shape

There's an IMC high-speed paper cup diverter for every cup, customizable to the unique needs of any application. Divert cups of any size, from standard and XL to jumbo popcorn tubs – horizontally or vertically – at lightning-fast speed, without jamming.

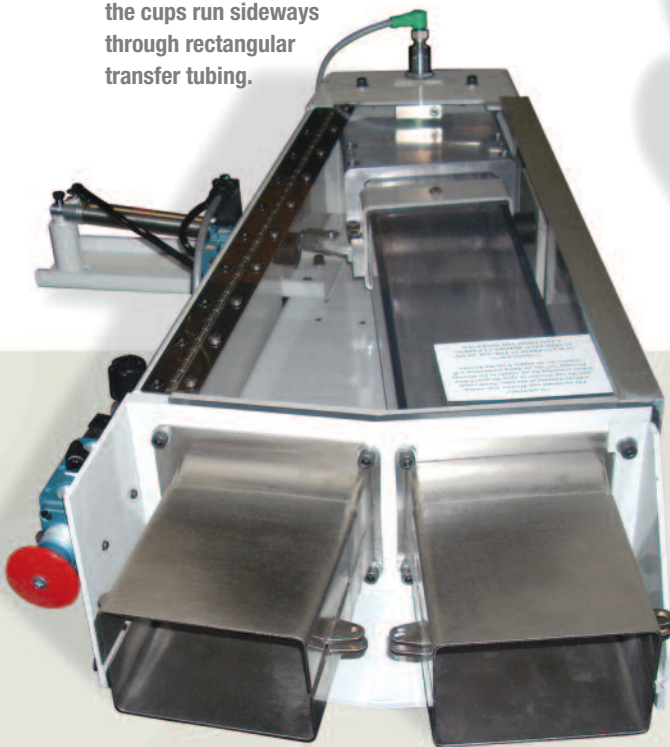
The IMC paper cup diverter includes:

- Air shut-off valve
- Regulator
- Gate control valve
- Easy clean-out position
- Tube connections sized to your specifications

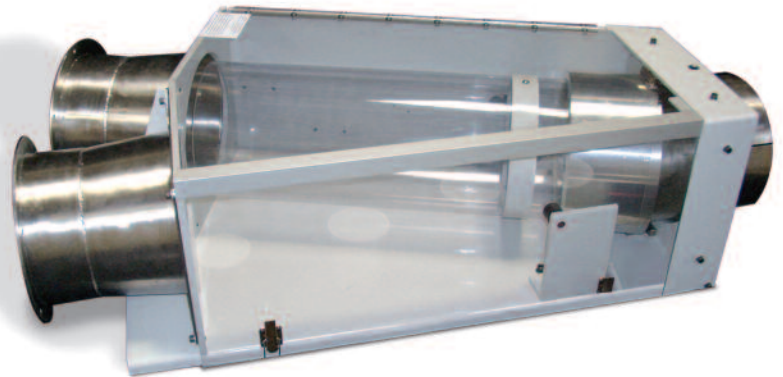


IMC's standard-size diverter, shown here in clean-out position, accommodates Busada tubing by directly connecting to up to 4-1/4 inch ID tube.

Our rectangular cup diverter is specifically designed for applications, such as soup cups, requiring that the cups run sideways through rectangular transfer tubing.



The XL-size diverter is used for connected tube sizes from 4-1/4 inches to jumbo tubs, without adaptors or retrofitting.



www.infinitemc.com

Infinite Motion Control, Inc. an engineering company

W60N151 Cardinal Ave. ■ Cedarburg, WI 53012 USA ■ Phone: +1 (262) 242-4333 ■ Fax: +1 (262) 242-5333

